

# Neural mechanisms underlying GABAergic regulation of adult hippocampal neurogenesis

Christina Catavero<sup>1,2</sup> · Hechen Bao<sup>1,3</sup> · Juan Song<sup>1,2,4</sup>

Received: 24 April 2017 / Accepted: 1 July 2017  
© Springer-Verlag GmbH Germany 2017

**Abstract** Within the dentate gyrus of the adult hippocampus is the subgranular zone, which contains a neurogenic niche for radial-glia like cells, the most primitive neural stem cells in the adult brain. The quiescence of neural stem cells is maintained by tonic gamma-aminobutyric acid (GABA) released from local interneurons. Once these cells differentiate into neural progenitor cells, GABA continues to regulate their development into mature granule cells, the principal cell type of the dentate gyrus. Here, we review the role of GABA circuits, signaling, and receptors in regulating development of adult-born cells, as well as the molecular players that modulate GABA signaling. Furthermore, we review recent findings linking dysregulation of adult hippocampal neurogenesis to the altered GABAergic circuitry and signaling under various pathological conditions.

**Keywords** Adult hippocampal neurogenesis · GABA signaling · GABA circuits · GABA receptors · Adult neural stem cells

## Introduction

Dentate granule cells in the hippocampus are continuously generated from neural stem cells throughout life in all mammals. Adult neurogenesis recapitulates the whole process of neuronal development in a mature central nervous system, from proliferation and fate specification of adult neural progenitors, morphogenesis, migration, axon/dendritic development, and finally synapse formation, culminating in the full integration of new neurons into the existing circuitry. Cumulative evidence suggests that new neurons participate in specific brain functions, such as learning and memory, mood regulation and stress response (Snyder et al. 2005; Becker and Wojtowicz 2007; Bruel-Jungerman et al. 2007; Deng et al. 2010; Parihar et al. 2011; Marin-Burgin and Schinder 2012). In adult humans, it is estimated that 700 adult-born neurons are added to the hippocampus daily, accounting for an annual turnover rate of 1.75% (Spalding et al. 2013). The dentate gyrus (DG) is believed to control the flow of cortical information into the hippocampus. It organizes sensory input arising from the perforant path of the entorhinal cortex and sends its excitatory output to the CA3 region of the hippocampus. This unilateral flow of information has been proposed to underlie the storage of episodic memory (Amaral et al. 2007). Adult-born granule cells (GCs) are commonly implicated in pattern separation, the process by which similar input patterns of neuronal activity can result in different output. Thus, pattern separation is believed to underlie the formation of new memories without the interference of old memories. Adult-born GCs have also been speculated to contribute to sparse coding in the DG, as well to act as individual coding units. In a recent review by Johnston et al., it was proposed that pattern separation and sparse coding of adult-born GCs regulate memory resolution and robustness while avoiding memory interference (Johnston et al. 2016).

---

✉ Juan Song  
juansong@email.unc.edu

<sup>1</sup> Department of Pharmacology, University of North Carolina, Chapel Hill, NC 27599, USA

<sup>2</sup> Neurobiology Curriculum, University of North Carolina, Chapel Hill, NC 27599, USA

<sup>3</sup> Bio-X Institutes, Shanghai Jiao Tong University, Shanghai 200240, China

<sup>4</sup> Neuroscience Center, University of North Carolina, Chapel Hill, NC 27599, USA

Gamma-aminobutyric acid (GABA), a major inhibitory neurotransmitter in the adult brain, activates synaptic and extrasynaptic GABA<sub>A</sub> receptors and leads to hyperpolarization of mature neurons. In the adult brain, as in the embryonic nervous system, GABA depolarizes neural progenitors and immature neurons. GABA also regulates quiescence of neural stem cells (NSCs), differentiation of NSCs into neural progenitor cells (NPCs), maturation of NPCs into granule cells and synaptic integration of adult-born granule cells into the existing circuitry of the hippocampus. Here, we review the existing literature on the role of GABA circuits, signaling and receptors in the regulation of the development of adult-born neurons, the molecular players that modulate GABA signaling and recent findings linking aberrant GABA circuits and signaling in various pathological conditions to dysregulation of adult hippocampal neurogenesis.

### Development of adult-born neurons in the hippocampus

The DG contains a neurogenic niche called the subgranular zone (SGZ) that is located between the hilus and granule cell layers. NSCs with radial morphology in the SGZ are essential substrates for continuous neurogenesis throughout life. Radial NSCs (rNSCs) are largely quiescent and they shuttle between quiescence and activation. When rNSCs become activated, they make neurogenic or gliagenic fate choices. Upon neurogenic division, rNSCs give rise to Tbr2<sup>+</sup> MCM2<sup>+</sup> intermediate progenitors, which in turn generate DCX<sup>+</sup> MCM2<sup>+</sup> neuroblasts, to become DCX<sup>+</sup> immature neurons and finally DCX<sup>+</sup>NeuN<sup>+</sup> mature dentate granule cells. During gliagenic division, rNSCs give rise to astroglia, which further differentiate into astrocytes (Fig. 1) (Eriksson et al. 1998; Johansson et al. 1999; Lagace et al. 2007; Bonaguidi et al. 2011). Electrophysiological studies have revealed a stereotyped process by which newborn neurons are integrated into existing hippocampal circuitry. Newborn neurons undergo an initial phase of tonic GABA activation (Ge et al. 2006), followed by the emergence of depolarizing GABAergic synaptic inputs and finally receive glutamatergic synaptic inputs as GABAergic responses become hyperpolarizing (Tozuka et al. 2005; Overstreet Wadiche et al. 2005; Song et al. 2013). The quiescence of rNSCs is maintained by tonic (nonsynaptic) GABA current from parvalbumin (PV<sup>+</sup>) interneurons (Song et al. 2012a). Furthermore, GABA signaling has been shown to be important for rNSCs to choose the proper fate upon their activation.

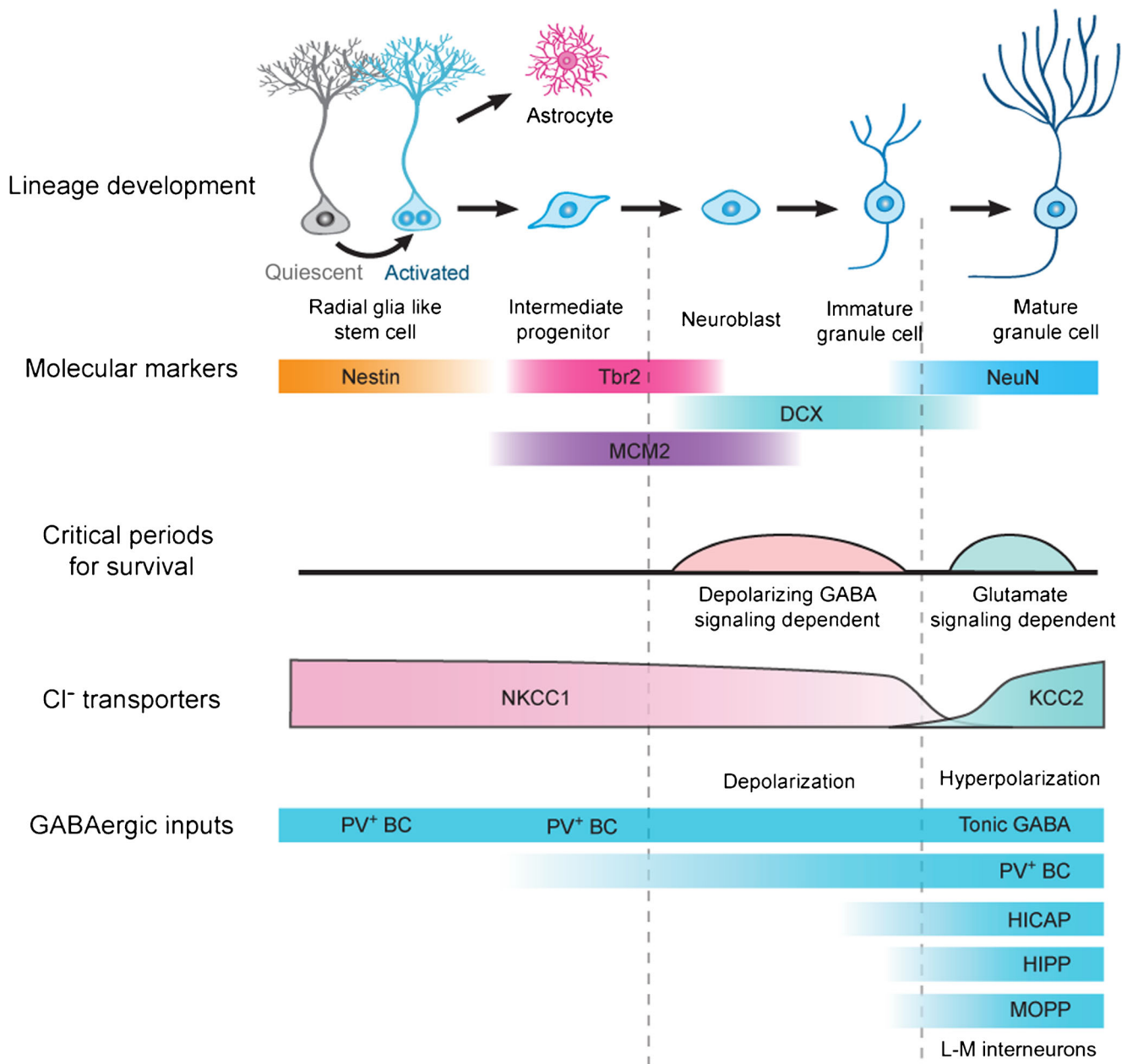
GABAergic synaptic inputs onto NPCs induce neuronal differentiation (Tozuka et al. 2005). Fate choice occurs within the first week of cell birth. During the second week, immature granule cells begin extending dendrites into the molecular

layer while migrating toward the granule cell layer. Throughout this period, GABA is depolarizing to adult-born cells due to expression of the Na<sup>+</sup>-K<sup>+</sup>-Cl<sup>-</sup> co-transporter NKCC1, which maintains a high intracellular chloride concentration. NKCC1 knockdown reduces proliferation of NPCs and delays dendritic development on newborn immature neurons (Ge et al. 2006; Young et al. 2012).

Young adult-born granule cells undergo a multi-week maturation process post-birth influenced by both GABAergic and glutamatergic inputs. It is estimated that the entire developmental process takes 8 weeks for adult-born granule cells to reach maturation similar to mature granule cells, though it has been noted that more than 8 weeks are needed for new axon terminals to reach comparable sizes and densities (Esposito et al. 2005; Zhao et al. 2006; Kempermann 2015; Toni and Schinder 2016; Toni and Sultan 2011). Interestingly, Toni et al. found that full maturation of adult-born neurons in terms of functional connectivity is reached 60–180 days post cell birth (Toni et al. 2008).

Two to three weeks after birth, adult-born cells must compete for synaptic integration. Over 50% of adult-born cells are lost during this time (Dayer et al. 2003). Glutamatergic signaling begins during this time period, as NMDA receptor-mediated integration also begins (Tashiro et al. 2006). Mossy cells and possibly mature granule cells provide glutamatergic input to adult-born cells (Kumamoto et al. 2012; Vivar et al. 2012). Young adult-born granule cells have greater dendritic Ca<sup>2+</sup> signaling compared to mature granule cells, which contributes to the cells' activity-dependent growth (Stocca et al. 2008). Heigele et al. recently showed that GABAergic interneurons have bidirectional control of young granule cell activity, promoting or inhibiting maturation of adult-born cells in a network activity-dependent manner. In young granule cells of 1.5–3 weeks post-mitosis, GABA acts as an excitatory neurotransmitter and supports spike initiation during moderate hippocampal network activity. However, during strong network activity, GABAergic stimulation can cause a membrane leakage conductance that shunts inhibition and halts action potential firing (Heigele et al. 2016). This work builds on evidence that excitatory GABA mediates the rate of activity-dependent growth in adult hippocampal neurogenesis (Ge et al. 2007).

During week 3 of development, NKCC1 expression declines and expression of the potassium chloride co-transporter KCC2 increases, such that GABA begins to exert a hyperpolarizing force on immature GCs due to decreased intracellular Cl<sup>-</sup> concentration (Kanaka et al. 2001; Wang et al. 2002). Four weeks post-birth, the dendritic arborization of adult-born cells expands and synaptogenesis occurs at the axon, dendrite and spine (Toni et al. 2007, 2008). Glutamatergic innervation by neurons in the entorhinal cortex, hilar cells and mossy cells begins to integrate adult-born GCs.



**Fig. 1** Adult hippocampal neurogenesis in the young adult mouse brain. Summary of the developmental processes of adult hippocampal neurogenesis, including time course of marker expression, developmental stages, critical periods for cell survival and special neuronal properties associated with different stages. *BC*

basket cells; *HICAP* hilar interneuron with commissural-associational pathway-associated axon terminals; *HIPP* hilar perforant path-associated interneurons; *MOPP* molecular-layer perforant pathway cells; *PV<sup>+</sup>* parvalbumin-expressing interneurons

During adult neurogenesis, not all adult-born neurons survive and are integrated into the existing hippocampal circuitry. It is not well understood how behavior influences integration, although evidence points to the role of GABAergic input. During development, there is a critical period in which GABA depolarization and NMDA receptor activation is required for experience-dependent synapse unsilencing (Chancey et al. 2013). NMDA receptor activation follows glutamatergic input and contributes to the maturation of the

adult-born GC (Tashiro et al. 2006). The unique synaptic properties of young GCs may be important for understanding integration into the existing hippocampal circuitry, as well as competition with mature GCs in influencing hippocampal activity. For example, immature adult-born GCs have high intrinsic excitability balanced by low excitatory synaptic innervation that prevents them from responding to broad cortical activity (Dieni et al. 2016). Four weeks after birth, young adult-born granule cells are capable of firing action potentials,

show increased synaptic potentiation compared to mature granule cells, and are preferentially recruited by existing circuits (Ge et al. 2007; Kee et al. 2007). Furthermore, Gu et al. demonstrated that optogenetic inhibition of adult-born neurons at 4–6 weeks (but not 2 weeks) post-birth modulate spatial and contextual learning (Gu et al. 2012). In addition, Zhuo et al. showed that young adult-born GCs 5–10 weeks post-birth can promote location discrimination, but only if the cells undergo maturation during the task acquisition (Zhuo et al. 2016). An additional layer of complexity in understanding integration was elucidated in a study characterizing individual adult-born GCs from 3 to 10 weeks of age. From this study, two functionally distinct states of adult-born GCs have emerged, and each state was independent of cellular age and maturity (Brunner et al. 2014). One population of adult-born GCs was sensitive to a narrow range of input intensities, while the other population broadly responded to input strength in a linear fashion. Input onto mature GCs also mediates the competition with adult-born GCs. By modulating spine dynamics of mature GCs, researchers showed that a decrease in mature GC spine density promotes integration of adult-born GCs (McAvoy et al. 2016). It has also been shown that pre-existing presynaptic terminals are redistributed to newly integrating GCs, thereby modifying excitatory synaptic transmission of existing neurons (Adlaf et al. 2017).

### Local GABA interneurons and adult hippocampal neurogenesis

In addition to excitatory principal cells such as dentate granule cells, hippocampal microcircuits recruit different types of local GABAergic interneurons, which exert inhibitory control at the soma, proximal dendrites, distal dendrites, and the axonal initial segment of the principal cells (Halasy et al. 1992; Freund and Buzsáki 1996; Houser 2007). The populations of hippocampal interneurons are remarkably diverse in their location, morphology, postsynaptic targets and gene expression (Freund and Buzsáki 1996; Maccaferri and Lacaille 2003). A number of interneurons with their axons in close proximity to the SGZ neurogenic niche can potentially exert a functional impact on adult neurogenesis. These interneurons include molecular layer perforant path (MOPP) interneurons, hilar commissural-associational pathway-related (HICAP) interneurons, hilar perforant path-associated (HIPP) interneurons, stratum lacunosum-moleculare (L–M) interneurons and basket cells (BC) (Fig. 1) (Han et al. 1993; Freund and Buzsáki 1996; Houser 2007).

Studies have just begun to characterize the interaction between local interneurons and adult precursors and their progeny, ranging from rNSCs, proliferating intermediate

NPCs and neuroblasts, post-mitotic immature neurons, to mature neurons (reviewed in Song et al. 2016). Previously, manipulations were mostly carried out in a cell-autonomous fashion through the “single-cell knockdown” approach that uses a retrovirus expressing a short-hairpin RNA (shRNA) to infect proliferating NPCs, sometimes in combination with pharmacological manipulations. Moreover, due to the inability to use traditional electrodes to stimulate specific neuronal populations in these experiments, precise analyses of circuit function and dynamics were not feasible. With recent technical advancements in circuitry manipulation via optogenetics, DREADDs (designer receptors exclusively activated by designer drugs) and cross-synaptic tracing technology, the field is in a unique position to address fundamental questions underlying activity-dependent regulation of adult neurogenesis.

Using rabies virus-mediated retrograde tracing in combination with retroviral approaches to label and birth-date newborn granule cells, recent studies have shown that adult-generated neurons receive local connections from multiple types of GABAergic interneurons, including PV<sup>+</sup> basket cells, somatostatin-positive (SST<sup>+</sup>) HIPP cells, HICAP cells and MOPP cells, such as neurogliaform cells/Ivy cells (Fig. 1) (Vivar et al. 2012; Deshpande et al. 2013). The rabies virus-based trans-synaptic tracing tool employed in these studies is very informative in terms of defining both the organization of monosynaptic connections and how individual neurons are integrated into polysynaptic networks. However, to identify the circuit-based regulation of early stages of adult neurogenesis (e.g., the neural stem cell stage and early neural progenitor/neuroblast stages), the cross-synaptic tracing approach is not feasible as no or very few immature synapses are present at those stages of development. Therefore, electrophysiological characterization is necessary to define the nature of functional inputs during initial phases of adult neurogenesis. A recent study using paired recording in acute slices showed that interneurons of the neurogliaform cell family provide a source of GABA for immature neurons labeled with POMC-EGFP (a transgenic marker for newly-born dentate GCs (Overstreet et al. 2004)) that are about 11–12 days after birth in the adult mouse dentate gyrus (Markwardt et al. 2011).

Despite recent progress in identifying afferent inputs to immature neurons, the evidence for local interneuron regulation of NSCs and precursor cells is still limited, largely due to the distinct properties of those cell populations, which prevent effective functional characterization. Furthermore, in vivo functional studies of those local interneurons in regulation of adult neurogenesis are still lacking. Using the combination of optogenetics and lineage-tracing to target the quiescent radial glia-like NSCs, Song et al. identified PV<sup>+</sup> interneurons as a cellular niche component that signals to quiescent NSCs through tonic GABA signaling in an activity-dependent fashion in the adult mouse dentate gyrus. Moreover, optogenetic



control of dentate PV<sup>+</sup> neuron activity but not SST<sup>+</sup> or vasoactive intestinal polypeptide (VIP<sup>+</sup>) interneurons, dictates the radial glia-like neural stem cell decision between quiescence and activation (Song et al. 2012a). In contrast to the direct synaptic inputs onto immature neurons in POMC-EGFP mice (Markwardt et al. 2009), no apparent functional GABAergic synaptic responses were detected when radial glia-like NSCs were recorded in this and previous studies (Wang et al. 2005), suggesting that GABA spillover from activated PV<sup>+</sup> interneuron-mature GC synapses indirectly regulates nearby radial stem cells by tonic GABA transmission. More recently, we showed that PV<sup>+</sup> interneurons make direct synaptic contacts with proliferating neuroblasts and regulate their survival and development in the adult dentate gyrus (Song et al. 2012a, 2013). Together, these results reveal a striking diametric regulation of two early critical steps of adult neurogenesis via PV<sup>+</sup> neuron activity: in the dentate gyrus with heightened activity, activation of PV<sup>+</sup> neurons inhibits quiescent neural stem cell activation while promoting the survival of proliferating NPCs already born; conversely, when the activity in the dentate gyrus is low, decreased PV<sup>+</sup> neuron activation promotes expansion of the quiescent neural stem cell pool via symmetric cell division and simultaneously suppresses the survival of proliferating NPCs (Song et al. 2012a, 2013). Interestingly, some local interneurons co-release GABA and neuropeptides, such as interneurons expressing markers of SST<sup>+</sup>, VIP<sup>+</sup>, cholecystokinin (CCK<sup>+</sup>) and neuropeptide Y (NPY<sup>+</sup>), which adds another layer of complexity to interneuron-mediated regulation of adult hippocampal neurogenesis. For instance, NPY<sup>+</sup> interneurons have been shown to mediate adult neurogenesis by promoting proliferation of the NSCs at the baseline and after seizure activity (Howell et al. 2003, 2007; Cardoso et al. 2010). VIP<sup>+</sup> interneurons in the DG have been implicated in adult neurogenesis, as signaling through the VIP receptor VPAC1 influences neuronal fate of stem cells in the SGZ, while activation of the VPAC2 receptor has been shown to increase symmetric division of the stem cell pool (Zaben et al. 2009). Given that GABA signaling plays a role in maintaining rNSC quiescence, these studies suggest that neuropeptides (vs. GABA) released from GABA interneurons may play a potential role in activating NSCs. Together, these studies provide a point of entry for understanding how circuit dynamics may impact different phases of adult neurogenesis. Future studies with detailed characterization of various synaptic inputs onto adult-born neurons at different developmental stages will provide insights into spatial and temporal organization of various local circuitry niche components in relation to sequential stages of adult neurogenesis.

In addition to the direct interaction between local interneurons and adult-born cells, local interneurons also interact with mature granule cells to control hippocampal network activity. More research is needed to examine if these circuits affect

development of adult-born neurons. Moreover, in the past several years, the role of PV<sup>+</sup> interneurons in regulating adult hippocampal neurogenesis has been revealed; however, to date, PV<sup>+</sup> interneurons seem to be the most well-characterized interneurons compared to the roles of CCK<sup>+</sup>, VIP<sup>+</sup>, calretinin (CR<sup>+</sup>), SST<sup>+</sup> and NPY<sup>+</sup> interneurons. Whether these diverse GABAergic interneuron subtypes uniquely contribute to adult hippocampal neurogenesis remains unknown. Furthermore, GABA release from local GABAergic interneurons can be regulated by a wide variety of neurotransmitters and neuromodulators, including glutamate from the entorhinal cortex, serotonin from the raphe nuclei (Matsuyama et al. 1997) and acetylcholine from the medial septum/diagonal band of Broca (Tozuka et al. 2005; Griguoli and Cherubini 2012; Teles-Grilo Ruivo and Mellor 2013). Therefore, local GABA interneurons may receive afferent inputs from distal brain regions. Indeed, electron microscopy and electrophysiology have shown that local GABA neurons receive both GABAergic and cholinergic inputs from the medial septum (Freund and Antal 1988; Pabst et al. 2016). How distal inputs impact adult hippocampal neurogenesis through local interneurons remains to be explored.

### Adult neurogenesis and hippocampal activity

Substantial evidence has suggested that these adult-born new neurons are involved in cognition, stress response and mood regulation (Harrison 2004; Kempermann et al. 2008; Le Strat et al. 2009; Song et al. 2012a, b; Zhou et al. 2013); and aberrant adult neurogenesis contributes to brain disorders, such as epilepsy and mental disorders, suggesting that adult neurogenesis may be a crucial substrate that can contribute to the onset of these disorders. This raises a fundamental question: how is hippocampal activity modulated by continuous addition of newborn neurons? Adult-born neurons could impact brain functions directly via two modes: first, as an additional information-processing unit and, second, as an active modulator of local circuitry to shape mature neuron firing, synchronization and network oscillations. One hallmark of the dentate gyrus is its sparse activation as shown by both in vivo recording of putative granule cells (Neunuebel and Knierim 2012) and immediate early gene expression (Ramirez-Amaya 2005). Although these adult-born neurons are small in absolute number, preferential recruitment of excitable immature neurons with enhanced plasticity would allow this population to be a major player in information processing within the trisynaptic hippocampal circuit. The contribution of the local hippocampal circuitry in regulating adult-born GCs has also been addressed in computational models as it relates to information processing and pattern separation (Myers and Scharfman 2009; Li et al. 2012; Temprana

et al. 2015). In the second mode, newborn neurons could actively modulate local circuit activity, for example, by maintaining a basal tone of excitation/inhibition or facilitating information encoding by increasing signal to noise ratio in the region and/or by priming circuits to respond (Freund 2003; Lacefield et al. 2010). Such activity modulation could have a direct impact on the local hippocampal circuit through axonal projections from newborn neurons to their downstream hippocampal targets (CA3 to CA1), or indirect impact on the global neural network through axonal projections of newborn neurons to the local neurons that project to other brain regions. These possibilities have not been tested experimentally until recently. Temprana et al. (2015) recently showed that immature GCs receive weak feed-back inhibition; however, once mature, these adult-born cells activate GABAergic parvalbumin (PV<sup>+</sup>) interneurons involved in feedback loops that restrict spiking of nearby GCs. The functional significance of this, as predicted by a computational model, is that the delayed-coupling of feedback inhibition during integration of adult-born GCs promotes sparse coding in the DG (Temprana et al. 2015). Furthermore, it has been shown that environmental enrichment promotes integration of adult-born GCs by activating mature GCs, which recruit PV<sup>+</sup> interneurons that target immature GCs (Alvarez et al. 2016). In addition, GABAergic interneurons in the DG have also been found to modulate sensorimotor gating during adolescence. Though further studies are needed, the authors speculate that changes in adult neurogenesis during adolescence may affect the survival of GABAergic interneurons (Guo et al. 2013). Moreover, adult-born granule cells have been shown to contribute to the excitatory–inhibitory balance of the DG by GABAergic synaptic input (Li et al. 2012; Ikrar et al. 2013). Park et al. found that adult-born granule cells indirectly contribute to memory discrimination by regulating this balance (Park et al. 2015). While it is clear that the excitation–inhibition balance in the dentate gyrus is crucial for hippocampal activity, the total contribution of hippocampal network control of adult neurogenesis and adult-born granule cells is yet to be determined. An interesting review by Piatti et al. (2013) raises the question: are adult-born granule cells carrying the message or dictating the tone within the hippocampus? Further studies are needed to characterize the unique properties of immature neurons and how they contribute to signaling in the dentate gyrus (Piatti et al. 2013).

### GABA receptor mechanisms in adult neurogenesis

Current knowledge on GABA receptor mechanisms underlying adult hippocampal neurogenesis is sparse. GABA<sub>A</sub> receptors (GABA<sub>A</sub>Rs) are fast, ionotropic, heteropentameric channels permeable to Cl<sup>−</sup> and HCO<sub>3</sub><sup>−</sup>. The quiescence of the SGZ stem cell pool is mediated by tonic GABA currents

through the GABA<sub>A</sub>Rs of the  $\alpha 5\beta 3\gamma 2$  composition (Song et al. 2012a). Tozuka et al. demonstrated that excitatory GABAergic input through GABA<sub>A</sub>Rs induces activity-dependent differentiation of NPCs (Tozuka et al. 2005). Duveau et al. found that distinct GABA<sub>A</sub> subtypes dictate spatiotemporal regulation of adult neurogenesis (Duveau et al. 2011). In their studies, tonic GABAergic transmission occurred through  $\alpha 4$  and  $\delta$  subunits, while phasic transmission occurred through  $\alpha 2$ . In addition, they showed that GABA<sub>A</sub>Rs containing  $\alpha 4$  but not  $\delta$  subunits modulate NPC proliferation, migration and dendritic development. They also found that  $\alpha 2$ -containing GABA<sub>A</sub>Rs determine the positioning of adult-born GCs and mediate dendritic arborization. Extrasynaptic GABA<sub>A</sub>Rs containing the  $\delta$  subunit are highly expressed throughout the DG and mice that lack this receptor display aberrant migration and development of adult-born neurons, as well as enhanced fear acquisition, impaired fear extinction and impaired recognition memory (Whissell et al. 2013).

In contrast to GABA<sub>A</sub>Rs, GABA<sub>B</sub> receptors (GABA<sub>B</sub>Rs) are metabotropic and have been associated with suppressed proliferation of adult neurogenesis in the DG (Felice et al. 2012). O’Leary et al. found that reductions in the GABA<sub>B</sub>R 1a isoform are associated with increased susceptibility to stress-induced anhedonia, while reductions in the 1b isoform are associated with resilience and increased adult neurogenesis (O’Leary et al. 2014). Since GABA<sub>B</sub>Rs are expressed in SGZ stem cells as well as throughout the adult hippocampal neurogenic lineage, it is possible that GABA<sub>A</sub>R and GABA<sub>B</sub>R signaling act synergistically to regulate adult neurogenesis (Giachino et al. 2013). Compared to GABA<sub>A</sub>Rs, relatively little is known about the mechanism through which GABA<sub>B</sub>Rs regulate adult neurogenesis.

### Molecular players that interact with GABA signaling for adult hippocampal neurogenesis regulation

Various molecules have been shown to mediate adult neurogenesis by modulating PV<sup>+</sup> interneuron-mediated GABA signaling. NFATc4 is an activity-dependent transcription factor of GABA<sub>A</sub>R  $\alpha 2$  and  $\alpha 4$  subunits (Quadrato et al. 2014). NFATc4 transduces BDNF signaling in adult-born GCs and regulates synaptic plasticity (Quadrato et al. 2012). BDNF synthesized in GC dendrites enhances GABA release in the SGZ, resulting in increased differentiation and maturation of progenitor cells partly from PV<sup>+</sup> interneurons (Waterhouse et al. 2012). Cav1.2, a subunit of L-type calcium channels, is needed for BDNF expression and promotes survival of young hippocampal neurons (Lee et al. 2016). The chemokine stromal cell-derived factor-1 (SDF-1) and its receptor CXCR4 up-regulate PV<sup>+</sup> interneuron GABAergic innervation of NPCs

(Bhattacharyya et al. 2008; Kolodziej et al. 2008). The extracellular matrix glycoprotein tenascin-R (TNR) is expressed by PV<sup>+</sup> interneurons in the DG as well as in differentiating NPCs (Xu et al. 2014). TNR<sup>-/-</sup> mice show an increase in PV<sup>+</sup> interneurons, which results in increased GABAergic transmission to cells in the SGZ and subsequently inhibits proliferation of NPCs (Xu et al. 2014).

Numerous other molecules have been implicated in GABA signaling. NSCs express the diazepam binding inhibitor (DBI) protein that dampens GABA signaling through GABA<sub>A</sub> receptors and acts as an adaptive mechanism in response to environmental changes such as physical exercise and environmental enrichment. DBI regulates the balance between quiescence and proliferation (Dumitru et al. 2017). Overexpression of neuroligin-2A, a synaptic adhesion molecule, in young GCs increases GABAergic innervation as well as spine density and size (Krzisch et al. 2016). This suggests that neuroligin-2a has a role in integration of adult-born GCs. Cdk5 has also been shown to affect development of adult-born GCs by mediating transmission through GABA<sub>A</sub>Rs containing the  $\alpha 5$  subunit (Deprez et al. 2016). Neuregulin-2 (NRG2) has a dual role in the synaptogenesis of adult-born GCs. The extracellular domain of NRG2 acts as a ligand for GABAR and therefore promotes GABAergic synaptogenesis in developing adult-born GCs, while the intracellular domain mediates dendritic growth and maturation of glutamatergic synapses (Lee et al. 2015). GABA-induced depolarization that is mediated by NKCC1 expression regulates disrupted-in-schizophrenia 1 (DISC1) through the AKT-mTOR pathway (Kim et al. 2009). DISC1 knockdown also induces early dendritic growth enhanced by GABA signaling through GABA<sub>A</sub>Rs.

### Dysfunction of GABA signaling causes adult neurogenesis deficits in diseased conditions

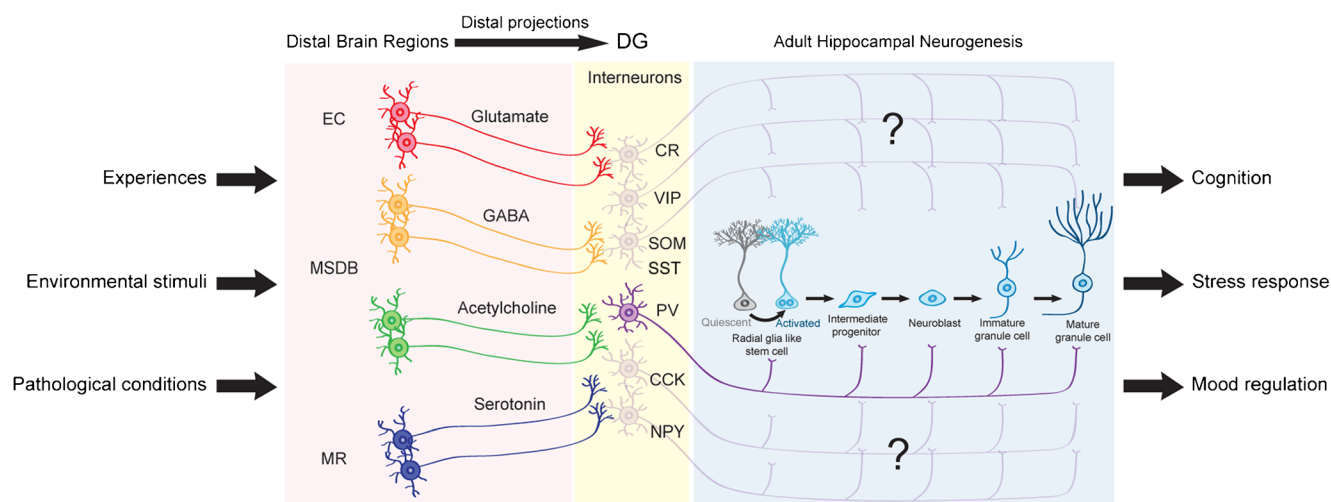
Adult neurogenesis is well known to be dynamically regulated by neuronal activity and experience, which is different from other somatic stem cell compartments where morphogens and growth factors generally serve as niche signals. Accumulating evidence suggests that adult neurogenesis is differentially regulated by various physiological and pathological stimuli (Crowther and Song 2014). As adult hippocampal neurogenesis occurs within a dynamic neuronal network, it is conceivable that the neural circuit activity could serve as an effective readout of current tissue demands and provide a signal to tune new neuron production and integration in response to experiences, environmental influence and pathological conditions (Fig. 2). Here, we review recent findings correlating aberrant GABA circuits and signaling in various pathological conditions to dysregulation of adult hippocampal neurogenesis.

### Alzheimer's disease

Aberrant adult hippocampal neurogenesis has been noted in numerous diseased conditions. In Alzheimer's disease (AD), an excitatory–inhibitory imbalance impairs adult neurogenesis (Sun et al. 2009). The amyloid precursor protein, the precursor to amyloid plaques associated with AD, is normally highly expressed in dentate GABAergic interneurons and controls adult neurogenesis by maintaining the excitatory–inhibitory balance (Wang et al. 2014). It has been shown that the genetic polymorphism apolipoprotein E4, a risk factor for AD, is associated with reduced GABAergic interneuron input to developing GCs and disrupted maturation (Li et al. 2009). In a triple transgenic mouse model of AD, selective loss of medium septum (MS) GABAergic neurons and dentate interneurons including PV<sup>+</sup> neurons were observed, which was accompanied with cognitive deficits (Loreth et al. 2012). Furthermore, aberrant hippocampal neurogenesis was observed in the AD mouse model with an initial increase followed by a decrease of adult hippocampal neurogenesis at the later stage (reviewed in Kuhn et al. 2007; Lazarov and Marr 2010). These data suggest that disruption of the MS-DG GABAergic circuit may correlate with impaired adult hippocampal neurogenesis under the pathological condition of AD. Future studies using circuit-based approaches to directly test this link will be of great interest to determine the significance of disrupted adult neurogenesis in AD.

### Epilepsy

Epilepsy has also been associated with disrupted adult neurogenesis. The accumulation of abnormal adult-born GCs predicts seizure frequency and severity (Hester and Danzer 2013). Interestingly, one study found that ablating adult-born GCs could reduce seizure frequency and duration (Hosford et al. 2016). One hypothesized mechanism of epilepsy is a reduction of GABAergic interneuron signaling in regulating adult neurogenesis (Scharfman and Brooks-Kayal 2014). Yutsudo et al. found that fosB-null mice are a plausible model for the comorbidity of spontaneous epilepsy and depressive behavior; these mice had fewer PV<sup>+</sup> interneurons and reduced thyroid-releasing hormone associated with GABA release (Yutsudo et al. 2013). Temporal lobe epilepsy is also associated with an initial loss of both glutamatergic and GABAergic synapses with GCs after status epilepticus, followed by the return to baseline of excitatory synapses and an overshoot in the number of inhibitory synapses (Thind et al. 2010). This builds on evidence that temporal lobe epilepsy is followed by an increase in proliferation of adult-born GCs (Parent et al. 1997). The mechanism of how this change in the excitatory–inhibitory balance regulates adult neurogenesis and the integration of immature GCs is unclear.



**Fig. 2** Experience-dependent regulation of adult hippocampal neurogenesis mediated by local interneurons. The figure illustrates how local interneurons may couple experiential and environmental stimuli to the regulation of adult hippocampal neurogenesis. Long-distance afferent inputs relay experiential and environmental information to the dentate interneurons to regulate various stages of adult hippocampal neurogenesis, from proliferation and fate specification of adult neural progenitors, morphogenesis, migration, axon/dendritic development and

finally synapse formation and integration. Furthermore, modified adult hippocampal neurogenesis by experiential and environmental stimuli can in turn contribute to normal and aberrant brain functions, such as learning and memory, stress response and mood regulation. *EC* entorhinal cortex; *MSDB* medial septum diagonal band; *MR* medial raphe; *CR* calretinin; *VIP* vasoactive intestinal peptide; *SST* somatostatin; *PV* parvalbumin; *CCK* cholecystokinin; *NPY* neuropeptide Y

For a more detailed review of GABAergic mechanisms in epilepsy relevant to adult neurogenesis, see review by Scharfman and Brooks-Kayal (2014).

## Stress, anxiety and depression

As adult hippocampal neurogenesis occurs within a dynamic neuronal network, it is conceivable that the local circuit activity could serve as an effective readout of current tissue demands and provide a signal to tune new neuron production in stressed, anxious and depressed states. GABAergic regulation of adult neurogenesis has been implicated in these neuropsychiatric states. Song et al. recently showed that  $PV^+$  neurons serve as a unique niche component to couple social isolation stimuli to the regulation of adult NSCs in the hippocampus (Song et al. 2012a). Specifically, decreased  $PV^+$  neuron activity by chronic social isolation promotes excessive activation and symmetric cell division of rNSCs at the expense of decreased neuronal production. In addition to reduced GABA interneuron activity, chronic stress has also been shown to reduce the number of GABAergic interneurons in a region-specific manner, so it is suspected that adult hippocampal neurogenesis is affected (Czeh et al. 2015). Moreover,  $PV^+$  and  $CR^+$  interneurons are reduced in the dorsal hippocampus and ventral CA1 following chronic stress, while  $NPY^+$  and  $SST^+$  interneurons are reduced throughout almost all regions of the dorsal and ventral hippocampus. Earnheart et al. found that inactivation of  $GABA_A$ Rs containing the  $\gamma 2$

subunit in the adult forebrain reduced adult hippocampal neurogenesis and increased behavioral inhibition to stressful situations (Earnheart et al. 2007). Shen et al. found that a deficit in GABAergic control of adult neurogenesis alone is insufficient to cause anxiety and depression (Shen et al. 2012). Interestingly, chronic fluoxetine (an SSRI commonly prescribed for anxiety and depression) reduces the number of  $PV^+$  interneurons and increases stem cell proliferation in the SGZ (Ohira et al. 2013).

## Autism

Disrupted adult neurogenesis has also been noted in animal models of autism spectrum disorder. Exposure to valproic acid has been used to induce autism-like phenotypes in animal models (Mabunga et al. 2015). Watanabe et al. recently reported that exposure to valproic acid from gestational day 6 to postnatal day 21 targets  $GAD67^+$  interneurons and has late effects on granule cell lineage due to altered proliferation and synaptic plasticity (Watanabe et al. 2017). MECP2 duplication syndrome, also associated with autism-like phenotypes, has been reported to significantly decrease GABAergic  $PV^+$  interneurons, resulting in reduced adult hippocampal dividing cells and an accumulation of quiescent neural stems in transgenic mice overexpressing MECP2, suggesting that MECP2 is important for differentiation of neuronal progenitor cells (Chen et al. 2017). The neuronal splicing regulator RBFOX3 (also known as neuronal marker NeuN) has been implicated in ASD,



epilepsy and cognitive disability and has been suggested to promote adult neurogenesis and synaptogenesis by GABAergic interneurons (Lin et al. 2016).

### GABA regulation of adult hippocampal neurogenesis as a potential therapeutic target

Various neuropsychiatric and neurodegenerative disorders are associated with hippocampal dysfunction, learning and memory deficits and impaired adult hippocampal neurogenesis. Although adult hippocampal neurogenesis is not thought to occur at a rate great enough to regenerate the hippocampus, targeting NSCs and their progeny could possibly restore some aspects of the cognitive functions. GABA<sub>A</sub> and GABA<sub>B</sub> receptors are potential drug targets for this purpose given their role in preserving the neural stem cell pool and promoting adult hippocampal neurogenesis. In addition, with the recent progress in identifying the specific interneuron types in regulating NSCs and hippocampal neurogenesis, there is great potential in targeting specific GABAergic interneuron populations, the sources of GABA signaling, in modulating the hippocampal circuit and hippocampal-dependent functions. Indeed, loss or dysfunction of GABAergic interneurons is commonly seen in various neurodegenerative and neuropsychiatric disorders linking to aberrant adult hippocampal neurogenesis (Marín 2012).

There have been variable outcomes regarding adult hippocampal neurogenesis in various AD mouse models depending on promoters, transgene expression and age of onset (Winner and Winkler 2015, Lazarov and Marr 2010; Marlatt and Lucassen 2010). However, Sun et al. showed that an imbalance of hippocampal GABAergic and glutamatergic signaling disrupts adult neurogenesis in an hAPP (human amyloid precursor protein) transgenic mouse model; this imbalance can be rescued by inhibition of GABA<sub>A</sub> receptors in early neurogenesis to suppress GABA signaling (Sun et al. 2009). A recent study by Muñoz et al. showed a new mouse model of Parkinson's disease that could also be rescued by targeting GABA<sub>A</sub> receptors. Smad3-deficient mice fail to induce LTP in the dentate gyrus due to enhanced GABA<sub>A</sub> receptor-mediated activity, in addition to decreased adult neurogenesis and dysregulated hippocampal function (Muñoz et al. 2016). Picrotoxin, a GABA<sub>A</sub> antagonist, rescued this phenotype. These studies demonstrate the potential in targeting GABA<sub>A</sub> receptors and adult hippocampal neurogenesis in neurodegenerative diseases.

GABA<sub>A</sub> receptor-modulatory actions of neurosteroids such as allopregnanolone (also known as 5 $\alpha$ 3 $\alpha$ -THPROG) have shown promising neurogenic outcomes as a potential therapy for AD and depressive-like behaviors (Wang et al. 2005, 2008, 2010; Gunn et al. 2015). Wang et al. (2010) showed that 5 $\alpha$ 3 $\alpha$ -THPROG can reverse the hippocampal-

dependent cognitive deficits in the 3xTgAD mouse model of AD. Evans et al. also showed exogenous 5 $\alpha$ 3 $\alpha$ -THPROG administration could prevent impaired adult hippocampal neurogenesis and depressive- and anxiety-like behaviors in a social isolation rat model of chronic stress (Evans et al. 2012).

Adult hippocampal neurogenesis has been implicated in the role of antidepressants. Some studies have indicated that neurogenesis is required for the behavioral effects of antidepressants (Santarelli 2003; Malberg and Duman 2003). However, there is also evidence for neurogenesis-independent antidepressant mechanisms and that ablating adult hippocampal neurogenesis is not sufficient to induce a depressive-like state (Airan et al. 2007; Sahay and Hen 2008; David et al. 2009; Kang et al. 2016). Interestingly, SSRIs increase adult neurogenesis but adult neurogenesis is not affected by knockout of 5-HT1A receptors (Santarelli 2003). Serotonin depletion also increases the survival of adult-born neurons (Diaz et al. 2013). Luscher and Fuchs suggested that antidepressants indirectly promote adult neurogenesis by acting on 5-HT1A receptors to inhibit GABAergic interneurons (Diaz et al. 2013; Luscher and Fuchs 2015). In addition, Egeland et al. found that mice lacking p11, a protein expressed by hippocampal interneurons, are non-responsive to fluoxetine treatment (Egeland et al. 2010). The fact that BDNF is upregulated by all antidepressants currently used, combined with evidence that BDNF is needed for normal interneuron maturation, further implicates the role of GABAergic interneuron dysregulation and impaired adult hippocampal neurogenesis in depressive-like states (reviewed in Luscher and Fuchs 2015). Changes in GABA<sub>B</sub> receptor activity have also been shown to enhance BDNF expression (Heese et al. 2000; Enna and McCarron 2006; Fiorentino et al. 2009). While a large body of data has suggested GABA<sub>B</sub> receptor as a therapeutic target for antidepressant drugs, how adult hippocampal neurogenesis fits into this paradigm is uncertain. A review by Ghose et al. suggested that decreased serotonergic activity enhances GABA<sub>B</sub> tone and therefore the response to antidepressants depends on reduction in GABA<sub>B</sub> receptor stimulation (Ghose et al. 2011). Overall, further research is needed to determine the potential of targeting GABAergic interneurons, GABA<sub>A</sub> receptors and GABA<sub>B</sub> receptors to treat neuropsychiatric disorders.

### Conclusion

Adult neurogenesis is a complex process that is regulated by neuronal activity. GABA is emerging as a key signal within the neurogenic niche, enabling rNSCs and their progeny to sense neuronal activity and to regulate their development. Aided by methodological advancements, studies have started to extensively investigate circuit-based regulation of adult hippocampal neurogenesis at distinct developmental stages.

Studies of local GABA interneuron circuits and GABA signaling in regulation of adult hippocampal neurogenesis have so far served as an entry point for exploring the basic principles of neuronal development in the context of dynamic and distinct neural circuit activity in the mature CNS. A unique feature of the hippocampal circuit is the large-scale structural modification via the addition of newborn neurons arising from ongoing neurogenesis. The entire milieu must preserve the functional integrity of the existing circuitry and, at the same time, it needs to provide a niche to support the development of adult-born neurons and allow these cells to modify the local neuronal network. The differential modulation by various types of local and distal circuits may thus provide the fine control of synaptic integration of adult-born neurons required for specific neurogenic events in response to experiences, environmental influences and pathological conditions. Defects in one or several of these mechanisms will lead to circuit abnormalities such as those associated with altered network excitability and behavioral defects (Zhou et al. 2013).

There are many unanswered questions regarding GABA-mediated regulation of adult neurogenesis. First, the local GABA interneuron circuit mechanisms underlying activity-dependent regulation of adult hippocampal neurogenesis remain elusive. The DG neurogenic niche consists of a diverse group of local interneurons with distinctive electrophysiological, molecular and innervation properties. However, virtually nothing is known about how distinct interneurons regulate well-defined developmental stages during adult hippocampal neurogenesis, ranging from neural stem cell fate decision and the proliferation of NPCs to maturation, synaptic integration and survival of newborn neurons (Zhao et al. 2008; Ming and Song 2011). Second, some local GABA interneurons co-release GABA and neuropeptides, such as the SST<sup>+</sup>, VIP<sup>+</sup>, CCK<sup>+</sup> and NPY<sup>+</sup> interneurons. The role of GABA in the regulation of adult hippocampal neurogenesis is well-defined but few studies have examined the role of GABA-mediated neuropeptides in adult neurogenesis regulation at the circuit level. The balance of neuropeptide and GABA signaling in regulating adult neurogenesis remains elusive. Third, GABA release from local hippocampal GABAergic interneurons can be regulated by a wide variety of neurotransmitters and neuromodulators, pointing to the possibility that local interneuron activity may be regulated by afferent inputs from distal brain regions. Future studies to identify neuronal networks linking long-distance inputs to distinct types of local interneurons for adult hippocampal neurogenesis regulation will have a number of implications for understanding the basic circuit mechanisms underlying dynamic control of adult hippocampal neurogenesis and for developing strategies in treating brain disorders potentially arising from aberrant hippocampal neurogenesis, such as Alzheimer's disease and schizophrenia.

**Acknowledgements** We thank Brent Asrican for helpful comments on the review. This work was supported by grants from the American Heart Association, Whitehall Foundation and NIH (R01MH111773, R21MH106939) to J.S. and NIH (T32NS007431) to C.C.

## References

- Adlaf EW, Vaden RJ, Niver AJ, Manuel AF, Onyilo VC, Araujo MT, Dieni CV, Vo HT, King GD, Wadiche JI, Overstreet-Wadiche L (2017) Adult-born neurons modify excitatory synaptic transmission to existing neurons. *elife* 6:e19886
- Airán RD, Meltzer LA, Roy M, Gong Y, Chen H, Deisseroth K (2007) High-speed imaging reveals Neurophysiological links to behavior in an animal model of depression. *Science* 317:819–823
- Alvarez DD, Giacomini D, Yang SM, Trinchero MF, Temprana SG, Buttner KA, Beltramone N, Schinder AF (2016) A disinaptic feedback network activated by experience promotes the integration of new granule cells. *Science* 354:459–465
- Amaral DG, Scharfman HE, Lavenex P (2007) The dentate gyrus: fundamental neuroanatomical organization (dentate gyrus for dummies). *Prog Brain Res* 163:3–22
- Becker S, Wojtowicz JM (2007) A model of hippocampal neurogenesis in memory and mood disorders. *Trends Cogn Sci* 11:70–76
- Bhattacharyya BJ, Banisadr G, Jung H, Ren D, Cronshaw DG, Zou Y, Miller RJ (2008) The Chemokine Stromal cell-derived factor-1 regulates GABAergic inputs to neural progenitors in the postnatal dentate Gyrus. *J Neurosci* 28:6720–6730
- Bonaguidi MA, Wheeler MA, Shapiro JS, Stadel RP, Sun GJ, Ming G, Song H (2011) In vivo Clonal analysis reveals self-renewing and multipotent adult neural stem cell characteristics. *Cell* 145:1142–1155
- Bruel-Jungerman E, Rampon C, Laroche S (2007) Adult hippocampal neurogenesis, synaptic plasticity and memory: facts and hypotheses. *Rev Neurosci* 18:93–114
- Brunner J, Neubrandt M, Van-Weert S, András T, Kleine Borgmann FB, Jessberger S, Szabadics J, Suh H, van Praag H, Buchholz B, Possnert G, Mash D, Druid H, Frisen J (2014) Adult-born granule cells mature through two functionally distinct states. *elife* 3:e03104
- Cardoso A, Freitas-da-Costa P, Carvalho LS, Lukoyanov NV (2010) Seizure-induced changes in neuropeptide Y-containing cortical neurons: potential role for seizure threshold and epileptogenesis. *Epilepsy Behav* 19:559–567
- Chancey JH, Adlaf EW, Sapp MC, Pugh PC, Wadiche JI, Overstreet-Wadiche LS (2013) GABA depolarization is required for experience-dependent synapse Unsilencing in adult-born neurons. *J Neurosci* 33:6614–6622
- Chen Z, Li X, Zhou J, Yuan B, Yu B, Tong D, Cheng C, Shao Y, Xia S, Zhang R, Lyu J, Yu X, Dong C, Zhou W-H, Qiu Z (2017) Accumulated quiescent neural stem cells in adult hippocampus of the mouse model for the MECP2 duplication syndrome. *Sci Rep* 7: 41701
- Crowther AJ, Song J (2014) Activity-dependent signaling mechanisms regulating adult hippocampal neural stem cells and their progeny. *Neurosci Bull* 30:542–556
- Czéh B, Varga ZKK, Henningsen K, Kovács GL, Miseta A, Wiborg O (2015) Chronic stress reduces the number of GABAergic interneurons in the adult rat hippocampus, dorsal-ventral and region-specific differences. *Hippocampus* 25:393–405
- David DJ, Samuels BA, Rainer Q, Wang J-W, Marsteller D, Mendez I, Drew M, Craig DA, Guiraud BP, Guilloux J-P, Artymyshyn RP, Gardier AM, Gerald C, Antonijevic IA, Leonardo ED, Hen R (2009) Neurogenesis-dependent and -independent effects of fluoxetine in an animal model of anxiety/depression. *Neuron* 62:479–493

- Dayer AG, Ford AA, Cleaver KM, Yassae M, Cameron HA (2003) Short-term and long-term survival of new neurons in the rat dentate gyrus. *J Comp Neurol* 460:563–572
- Deng W, Aimone JB, Gage FH (2010) New neurons and new memories: how does adult hippocampal neurogenesis affect learning and memory? *Nat Rev Neurosci* 11:339–350
- Deprez F, Vogt F, Floriou-Servou A, Lafourcade C, Rudolph U, Tyagarajan SK, Fritschy J-M (2016) Partial inactivation of GABA<sub>A</sub> receptors containing the  $\alpha 5$  subunit affects the development of adult-born dentate gyrus granule cells. *Eur J Neurosci* 44:2258–2271
- Deshpande A, Bergami M, Ghanem A, Conzelmann K-K, Lepier A, Götz M, Berninger B (2013) Retrograde monosynaptic tracing reveals the temporal evolution of inputs onto new neurons in the adult dentate gyrus and olfactory bulb. *Proc Natl Acad Sci U S A* 110:E1152–E1161
- Diaz SL, Narboux-Nême N, Trowbridge S, Scotto-Lomassese S, Kleine Borgmann FB, Jessberger S, Giros B, Maroteaux L, Deneris E, Gaspar P (2013) Paradoxical increase in survival of newborn neurons in the dentate gyrus of mice with constitutive depletion of serotonin. *Eur J Neurosci* 38:2650–2658
- Dieni CV, Panichi R, Aimone JB, Kuo CT, Wadiche JI, Overstreet-Wadiche L (2016) Low excitatory innervation balances high intrinsic excitability of immature dentate neurons. *Nat Commun* 7:11313
- Dumitru I, Neitz A, Alfonso J, Monyer H (2017) Diazepam binding inhibitor promotes stem cell expansion controlling environment-dependent Neurogenesis. *Neuron* 94:125–137.e5
- Duveau V, Laustela S, Barth L, Gianolini F, Vogt KE, Keist R, Chandra D, Homanics GE, Rudolph U, Fritschy J-M (2011) Spatiotemporal specificity of GABAA receptor-mediated regulation of adult hippocampal neurogenesis. *Eur J Neurosci* 34:362–373
- Earnheart JC, Schweizer C, Crestani F, Iwasato T, Itoharu S, Mohler H, Lüscher B (2007) GABAergic control of adult hippocampal neurogenesis in relation to behavior indicative of trait anxiety and depression states. *J Neurosci* 27:3845–3854
- Egeland M, Warner-Schmidt J, Greengard P, Svenningsson P (2010) Neurogenic effects of fluoxetine are attenuated in p11 (S100A10) knockout mice. *Biol Psychiatry* 67:1048–1056
- Enna SJ, McCarson KE (2006) The role of GABA in the mediation and perception of pain. *Adv Pharmacol* 54:1–27
- Eriksson PS, Perfilieva E, Björk-Eriksson T, Alborn A-M, Nordborg C, Peterson DA, Gage FH (1998) Neurogenesis in the adult human hippocampus. *Nat Med* 4:1313–1317
- Esposito MS, Piatti VC, Laplagne DA, Morgenstern NA, Ferrari CC, Pitossi FJ, Schinder AF (2005) Neuronal differentiation in the adult hippocampus recapitulates embryonic development. *J Neurosci* 25:10074–10086
- Evans J, Sun Y, McGregor A, Connor B (2012) Allopregnanolone regulates neurogenesis and depressive/anxiety-like behaviour in a social isolation rodent model of chronic stress. *Neuropharmacology* 63:1315–1326
- Felice D, O’Leary OF, Pizzo RC, Cryan JF (2012) Blockade of the GABAB receptor increases neurogenesis in the ventral but not dorsal adult hippocampus: relevance to antidepressant action. *Neuropharmacology* 63:1380–1388
- Fiorentino H, Kuczewski N, Diabira D, Ferrand N, Pangalos MN, Porcher C, Gaiarsa J-L (2009) GABAB receptor activation triggers BDNF release and promotes the maturation of GABAergic synapses. *J Neurosci* 29:11650–11661
- Freund TF (2003) Interneuron diversity series: rhythm and mood in perisomatic inhibition. *Trends Neurosci* 26:489–495
- Freund TF, Antal M (1988) GABA-containing neurons in the septum control inhibitory interneurons in the hippocampus. *Nature* 336:170–173
- Freund TF, Buzsáki G (1996) Interneurons of the hippocampus. *Hippocampus* 6:347–470
- Ge S, Goh ELK, Sailor KA, Kitabatake Y, Ming G, Song H (2006) GABA regulates synaptic integration of newly generated neurons in the adult brain. *Nature* 439:589–593
- Ge S, Pradhan DA, Ming G-L, Song H (2007) GABA sets the tempo for activity-dependent adult neurogenesis. *Trends Neurosci* 30:1–8
- Ghose S, Winter MK, McCarson KE, Tamminga CA, Enna SJ (2011) The GABA $\beta$  receptor as a target for antidepressant drug action. *Br J Pharmacol* 162:1–17
- Giachino C, Barz M, Tchorz JS, Tome M, Gassmann M, Bischofberger J, Bettler B, Taylor V (2013) GABA suppresses neurogenesis in the adult hippocampus through GABAB receptors. *Development* 141:83–90
- Griguoli M, Cherubini E (2012) Regulation of hippocampal inhibitory circuits by nicotinic acetylcholine receptors. *J Physiol* 590:655–666
- Gu Y, Arruda-Carvalho M, Wang J, Janoschka SR, Josselyn SA, Frankland PW, Ge S (2012) Optical controlling reveals time-dependent roles for adult-born dentate granule cells. *Nat Neurosci* 15:1700–1706
- Gunn BG, Cunningham L, Mitchell SG, Swinny JD, Lambert JJ, Belelli D (2015) GABAA receptor-acting neurosteroids: a role in the development and regulation of the stress response. *Front Neuroendocrinol* 36:28–48
- Guo N, Yoshizaki K, Kimura R, Suto F, Yanagawa Y, Osumi N (2013) A sensitive period for GABAergic interneurons in the dentate Gyrus in modulating Sensorimotor gating. *J Neurosci* 33:6691–6704
- Halasy K, Miettinen R, Szabot E, Freund TF (1992) GABAergic Interneurons are the major postsynaptic targets of median Raphe afferents in the rat dentate Gyrus. *Eur J Neurosci* 4:144–153
- Han ZS, Buhl EH, Lorinczi Z, Somogyi P (1993) A high degree of spatial selectivity in the axonal and dendritic domains of physiologically identified local-circuit neurons in the dentate gyrus of the rat hippocampus. *Eur J Neurosci* 5:395–410
- Harrison P (2004) The hippocampus in schizophrenia: a review of the neuropathological evidence and its pathophysiological implications. *Psychopharmacology* 174:151–162
- Heese K, Otten U, Mathivet P, Raiteri M, Marescaux C, Bernasconi R (2000) GABA(B) receptor antagonists elevate both mRNA and protein levels of the neurotrophins nerve growth factor (NGF) and brain-derived neurotrophic factor (BDNF) but not neurotrophin-3 (NT-3) in brain and spinal cord of rats. *Neuropharmacology* 39:449–462
- Heigle S, Sultan S, Toni N, Bischofberger J (2016) Bidirectional GABAergic control of action potential firing in newborn hippocampal granule cells. *Nat Neurosci* 19:263–270
- Hester MS, Danzer SC (2013) Accumulation of abnormal adult-generated Hippocampal granule cells predicts seizure frequency and severity. *J Neurosci* 33:8926–8936
- Hosford BE, Liska JP, Danzer SC (2016) Ablation of newly generated Hippocampal granule cells has disease-modifying effects in epilepsy. *J Neurosci* 36:11013–11023
- Houser CR (2007) Interneurons of the dentate gyrus: an overview of cell types, terminal fields and neurochemical identity. *Prog Brain Res* 163:217–232
- Howell OW, Scharfman HE, Herzog H, Sundstrom LE, Beck-Sickinger A, Gray WP (2003) Neuropeptide Y is neuroproliferative for postnatal hippocampal precursor cells. *J Neurochem* 86:646–659
- Howell OW, Silva S, Scharfman HE, Sosunov AA, Zaben M, Shatya A, Mckhann G, Herzog H, Laskowski A, Gray WP, Gray WP (2007) Neuropeptide Y is important for basal and seizure-induced precursor cell proliferation in the hippocampus. *Neurobiol Dis* 26:174–188
- Ikrar T, Guo N, He K, Besnard A, Levinson S, Hill A, Lee H-K, Hen R, Xu X, Sahay A (2013) Adult neurogenesis modifies excitability of the dentate gyrus. *Front Neural Circuits* 7:204
- Johansson CB, Momma S, Clarke DL, Risling M, Lendahl U, Frisén J (1999) Identification of a neural stem cell in the adult mammalian central nervous system. *Cell* 96:25–34



- Johnston ST, Shtrahman M, Parylak S, Gonçalves JT, Gage FH (2016) Paradox of pattern separation and adult neurogenesis: a dual role for new neurons balancing memory resolution and robustness. *Neurobiol Learn Mem* 129:60–68
- Kanaka C, Ohno K, Okabe A, Kuriyama K, Itoh T, Fukuda A, Sato K (2001) The differential expression patterns of messenger RNAs encoding K-Cl cotransporters (KCC1,2) and Na-K-2Cl cotransporter (NKCC1) in the rat nervous system. *Neuroscience* 104:933–946
- Kang E, Wen Z, Song H, Christian KM, Ming G (2016) Adult Neurogenesis and psychiatric disorders. *Cold Spring Harb Perspect Biol* 8:a019026
- Kee N, Teixeira CM, Wang AH, Frankland PW (2007) Preferential incorporation of adult-generated granule cells into spatial memory networks in the dentate gyrus. *Nat Neurosci* 10:355–362
- Kempermann G (2015) Activity dependency and aging in the regulation of adult Neurogenesis. *Cold Spring Harb Perspect Biol* 7:a018929
- Kempermann G, Krebs J, Fabel K (2008) The contribution of failing adult hippocampal neurogenesis to psychiatric disorders. *Curr Opin Psychiatry* 21:290–295
- Kim JY, Duan X, Liu CY, Jang M-H, Guo JU, Pow-anpongkul N, Kang E, Song H, Ming G (2009) DISC1 regulates new neuron development in the adult brain via modulation of AKT-mTOR signaling through KIAA1212. *Neuron* 63:761–773
- Kim JY, Liu CY, Zhang F, Duan X, Wen Z, Song J, Feighery E, Lu B, Rujescu D, St Clair D, Christian K, Callicott JH, Weinberger DR, Song H, Ming G (2012) Interplay between DISC1 and GABA signaling regulates Neurogenesis in mice and risk for schizophrenia. *Cell* 148:1051–1064
- Kolodziej A, Schulz S, Guyon A, Wu D-F, Pfeiffer M, Odemis V, Holtt V, Stumm R (2008) Tonic activation of CXCR4 Chemokine receptor 4 in immature granule cells supports Neurogenesis in the adult dentate Gyrus. *J Neurosci* 28:4488–4500
- Krzsich M, Fülling C, Jabinet L, Armida J, Gebara E, Cassé F, Habbas S, Volterra A, Homung J-P, Toni N (2016) Synaptic adhesion molecules regulate the integration of new granule neurons in the postnatal mouse hippocampus and their impact on spatial memory. *Cereb Cortex*. doi:10.1093/cercor/bhw217
- Kuhn HG, Cooper-Kuhn CM, Boekhoorn K, Lucassen PJ (2007) Changes in neurogenesis in dementia and Alzheimer mouse models: are they functionally relevant? *Eur Arch Psychiatry Clin Neurosci* 257:281–289
- Kumamoto N, Gu Y, Wang J, Janoschka S, Takemaru K-I, Levine J, Ge S (2012) A role for primary cilia in glutamatergic synaptic integration of adult-born neurons. *Nat Neurosci* 15:399–405
- Lacefield CO, Itskov V, Reardon T, Hen R, Gordon JA (2010) Effects of adult-generated granule cells on coordinated network activity in the dentate gyrus. *Hippocampus* 22:106–116
- Lagace DC, Whitman MC, Noonan MA, Ables JL, DeCarolis NA, Arguello AA, Donovan MH, Fischer SJ, Farnbauch LA, Beech RD, DiLeone RJ, Greer CA, Mandyam CD, Eisch AJ (2007) Dynamic contribution of nestin-expressing stem cells to adult Neurogenesis. *J Neurosci* 27:12623–12629
- Lazarov O, Marr RA (2010) Neurogenesis and Alzheimer's disease: at the crossroads. *Exp Neurol* 223:267–281
- Le Strat Y, Ramoz N, Gorwood P (2009) The role of genes involved in neuroplasticity and neurogenesis in the observation of a gene-environment interaction (GxE) in schizophrenia. *Curr Mol Med* 9: 506–518
- Lee K-H, Lee H, Yang CH, Ko J-S, Park C-H, Woo R-S, Kim JY, Sun W, Kim J-H, Ho W-K, Lee S-H (2015) Bidirectional signaling of Neuregulin-2 mediates formation of GABAergic synapses and maturation of Glutamatergic synapses in newborn granule cells of postnatal hippocampus. *J Neurosci* 35:16479–16493
- Lee AS, De Jesús-Cortés H, Kabir ZD, Knobbe W, Orr M, Burgdorf C, Huntington P, McDaniel L, Britt JK, Hoffmann F, Brat DJ, Rajadhyaksha AM, Pieper AA (2016) The neuropsychiatric disease-associated gene *cacna1c* mediates survival of young Hippocampal neurons. *eNeuro* 3:0006
- Li G, Bien-Ly N, Andrews-Zwilling Y, Xu Q, Bernardo A, Ring K, Halabisky B, Deng C, Mahley RW, Huang Y (2009) GABAergic interneuron dysfunction impairs Hippocampal Neurogenesis in adult Apolipoprotein E4 Knockin mice. *Cell Stem Cell* 5:634–645
- Li Y, Aimone JB, Xu X, Callaway EM, Gage FH (2012) Development of GABAergic inputs controls the contribution of maturing neurons to the adult hippocampal network. *Proc Natl Acad Sci U S A* 109: 4290–4295
- Lin Y-S, Wang H-Y, Huang D-F, Hsieh P-F, Lin M-Y, Chou C-H, Wu I-J, Huang G-J, Gau SS-F, Huang H-S (2016) Neuronal splicing regulator RBFOX3 (NeuN) regulates adult Hippocampal Neurogenesis and Synaptogenesis. *PLoS ONE* 11:e0164164
- Loreth D, Ozmen L, Revel FG, Knoflach F, Wetzel P, Frotscher M, Metzger F, Kretz O (2012) Selective degeneration of septal and hippocampal GABAergic neurons in a mouse model of amyloidosis and tauopathy. *Neurobiol Dis* 47:1–12
- Luscher B, Fuchs T (2015) GABAergic control of depression-related brain states. *Adv Pharmacol* 73:97–144
- Mabunga DFN, Gonzales ELT, Kim J-W, Kim KC, Shin CY (2015) Exploring the validity of Valproic acid animal model of autism. *Exp Neurobiol* 24:285–300
- Maccaferri G, Lacaille J-C (2003) Interneuron diversity series: Hippocampal interneuron classifications – making things as simple as possible, not simpler. *Trends Neurosci* 26:564–571
- Malberg JE, Duman RS (2003) Cell proliferation in adult hippocampus is decreased by inescapable stress: reversal by fluoxetine treatment. *Neuropsychopharmacology* 28:1562–1571
- Marín O (2012) Interneuron dysfunction in psychiatric disorders. *Nat Rev Neurosci* 13:107–120
- Marín-Burgin A, Schinder AF (2012) Requirement of adult-born neurons for hippocampus-dependent learning. *Behav Brain Res* 227:391–399
- Markwardt SJ, Wadiche JI, Overstreet-Wadiche LS (2009) Input-specific GABAergic signaling to newborn neurons in adult dentate gyrus. *J Neurosci* 29:15063–15072
- Markwardt SJ, Diéni CV, Wadiche JI, Overstreet-Wadiche LS (2011) Ivy/neurogliaform interneurons coordinate activity in the neurogenic niche. *Nat Neurosci* 14:1407–1409
- Marlatt MW, Lucassen PJ (2010) Neurogenesis and Alzheimer's disease: biology and pathophysiology in mice and men. *Curr Alzheimer Res* 7:113–125
- Matsuyama S, Nei K, Tanaka C (1997) Regulation of GABA release via NMDA and 5-HT<sub>1A</sub> receptors in guinea pig dentate gyrus. *Brain Res* 761:105–112
- McAvoy KM, Scobie KN, Berger S, Russo C, Guo N, Decharatanachart P, Vega-Ramirez H, Miake-Lye S, Whalen M, Nelson M, Bergami M, Bartsch D, Hen R, Berninger B, Sahay A (2016) Modulating neuronal competition dynamics in the dentate Gyrus to rejuvenate aging memory circuits. *Neuron* 91:1356–1373
- Ming G, Song H (2011) Adult Neurogenesis in the mammalian brain: significant answers and significant questions. *Neuron* 70:687–702
- Muñoz MD, Antolín-Vallespín M, Tapia-González S, Sánchez-Capelo A (2016) Smad3 deficiency inhibits dentate gyrus LTP by enhancing GABA<sub>A</sub> neurotransmission. *J Neurochem* 137:190–199
- Myers CE, Scharfman HE (2009) A role for hilar cells in pattern separation in the dentate gyrus: a computational approach. *Hippocampus* 19:321–337
- Neunuebel JP, Knierim JJ (2012) Spatial firing correlates of physiologically distinct cell types of the rat dentate Gyrus. *J Neurosci* 32:3848–3858
- O'Leary OF, Felice D, Galimberti S, Savignac HM, Bravo JA, Crowley T, El Yacoubi M, Vaugeois J-M, Gassmann M, Bettler B, Dinan TG, Cryan JF (2014) GABA<sub>B(1)</sub> receptor subunit isoforms differentially



- regulate stress resilience. *Proc Natl Acad Sci U S A* 111:15232–15237
- Ohira K, Takeuchi R, Iwanaga T, Miyakawa T (2013) Chronic fluoxetine treatment reduces parvalbumin expression and perineuronal nets in gamma-aminobutyric acidergic interneurons of the frontal cortex in adult mice. *Mol Brain* 6:43
- Overstreet Wadiche L, Bromberg DA, Bensen AL, Westbrook GL (2005) GABAergic signaling to newborn neurons in dentate gyrus. *J Neurophysiol* 94:4528–4532
- Overstreet LS, Hentges ST, Bumashny VF, de Souza FS, Smart JL, Santangelo AM, Low MJ, Westbrook GL, Rubinstein M (2004) A transgenic marker for newly born granule cells in dentate gyrus. *J Neurosci* 24:3251–3259
- Pabst M, Braganza O, Dannenberg H, Hu W, Pothmann L, Rosen J, Mody I, van Loo K, Deisseroth K, Becker AJ, Schoch S, Beck H (2016) Astrocyte intermediaries of septal cholinergic modulation in the hippocampus. *Neuron* 90:853–865
- Parent JM, Yu TW, Leibowitz RT, Geschwind DH, Sloviter RS, Lowenstein DH (1997) Dentate granule cell neurogenesis is increased by seizures and contributes to aberrant network reorganization in the adult rat hippocampus. *J Neurosci* 17:3727–3738
- Parihar VK, Hattiangady B, Kuruba R, Shuai B, Shetty AK (2011) Predictable chronic mild stress improves mood, hippocampal neurogenesis and memory. *Mol Psychiatry* 16:171–183
- Park EH, Burghardt NS, Dvorak D, Hen R, Fenton AA (2015) Experience-dependent regulation of dentate Gyrus excitability by adult-born granule cells. *J Neurosci* 35:11656–11666
- Piatti VC, Ewell LA, Leutgeb JK (2013) Neurogenesis in the dentate gyrus: carrying the message or dictating the tone. *Front Neurosci* 7:50
- Quadrato G, Benevento M, Alber S, Jacob C, Floriddia EM, Nguyen T, Elnaggar MY, Pedroarena CM, Molkenin JD, Di Giovanni S (2012) Nuclear factor of activated T cells (NFATc4) is required for BDNF-dependent survival of adult-born neurons and spatial memory formation in the hippocampus. *Proc Natl Acad Sci U S A* 109:E1499–E1508
- Quadrato G, Elnaggar MY, Duman C, Sabino A, Forsberg K, Di Giovanni S (2014) Modulation of GABAA receptor signaling increases Neurogenesis and suppresses anxiety through NFATc4. *J Neurosci* 34:8630–8645
- Ramirez-Amaya V (2005) Spatial exploration-induced arc mRNA and protein expression: evidence for selective, network-specific reactivation. *J Neurosci* 25:1761–1768
- Sahay A, Hen R (2008) Hippocampal neurogenesis and depression. *Novartis Found Symp* 289:152–160 discussion 160–4, 193–5
- Santarelli L (2003) Requirement of Hippocampal Neurogenesis for the behavioral effects of antidepressants. *Science* 301:805–809
- Scharfman HE, Brooks-Kayal AR (2014) Is plasticity of GABAergic mechanisms relevant to Epileptogenesis? *Adv Exp Med Biol* 813:133–150
- Shen Q, Fuchs T, Sahir N, Luscher B, Habre W (2012) GABAergic control of critical developmental periods for anxiety- and depression-related behavior in mice. *PLoS ONE* 7:e47441
- Snyder JS, Hong NS, McDonald RJ, Wojtowicz JM (2005) A role for adult neurogenesis in spatial long-term memory. *Neuroscience* 130:843–852
- Song J, Zhong C, Bonaguidi MA, Sun GJ, Hsu D, Gu Y, Meletis K, Huang ZJ, Ge S, Enikolopov G, Deisseroth K, Luscher B, Christian KM, Ming G, Song H (2012a) Neuronal circuitry mechanism regulating adult quiescent neural stem-cell fate decision. *Nature* 489:150–154
- Song J, Christian KM, Ming G, Song H (2012b) Modification of hippocampal circuitry by adult neurogenesis. *Dev Neurobiol* 72:1032–1043
- Song J, Sun J, Moss J, Wen Z, Sun GJ, Hsu D, Zhong C, Davoudi H, Christian KM, Toni N, Ming G, Song H (2013) Parvalbumin interneurons mediate neuronal circuitry–neurogenesis coupling in the adult hippocampus. *Nat Neurosci* 16:1728–1730
- Song J, Olsen RHJ, Sun J, Ming G, Song H (2016) Neuronal circuitry mechanisms regulating adult mammalian Neurogenesis. *Cold Spring Harb Perspect Biol* 8:a018937
- Spalding KL, Bergmann O, Alkass K, Bernard S, Salehpour M, Huttner HB, Boström E, Westerlund I, Vial C, Buchholz BA, Possnert G, Mash DC, Druid H, Frisén J (2013) Dynamics of Hippocampal Neurogenesis in adult humans. *Cell* 153:1219–1227
- Stocca G, Schmidt-Hieber C, Bischofberger J (2008) Differential dendritic  $Ca^{2+}$  signalling in young and mature hippocampal granule cells. *J Physiol* 586:3795–3811
- Sun B, Halabisky B, Zhou Y, Palop JJ, Yu G, Mucke L, Gan L (2009) Imbalance between GABAergic and Glutamatergic transmission impairs adult Neurogenesis in an animal model of Alzheimer's disease. *Cell Stem Cell* 5:624–633
- Tashiro A, Sandler VM, Toni N, Zhao C, Gage FH (2006) NMDA-receptor-mediated, cell-specific integration of new neurons in adult dentate gyrus. *Nature* 442:929–933
- Teles-Grilo Ruivo LM, Mellor JR (2013) Cholinergic modulation of hippocampal network function. *Front Synaptic Neurosci*. doi:10.3389/fnsyn.2013.00002
- Temprana SG, Mongiat LA, Yang SM, Trinchero MF, Alvarez DD, Kropff E, Giacomini D, Beltramone N, Lanuza GM, Schinder AF (2015) Delayed coupling to feedback inhibition during a critical period for the integration of adult-born granule cells. *Neuron* 85:116–130
- Thind KK, Yamawaki R, Phanwar I, Zhang G, Wen X, Buckmaster PS (2010) Initial loss but later excess of GABAergic synapses with dentate granule cells in a rat model of temporal lobe epilepsy. *J Comp Neurol* 518:647–667
- Toni N, Schinder AF (2015) Maturation and functional integration of new granule cells into the adult hippocampus. *Cold Spring Harb Perspect Biol* 8:a018903
- Toni N, Sultan S (2011) Synapse formation on adult-born hippocampal neurons. *Eur J Neurosci* 33:1062–1068
- Toni N, Teng EM, Bushong EA, Aimone JB, Zhao C, Consiglio A, van Praag H, Martone ME, Ellisman MH, Gage FH (2007) Synapse formation on neurons born in the adult hippocampus. *Nat Neurosci* 10:727–734
- Toni N, Laplagne DA, Zhao C, Lombardi G, Ribak CE, Gage FH, Schinder AF (2008) Neurons born in the adult dentate gyrus form functional synapses with target cells. *Nat Neurosci* 11:901–907
- Tozuka Y, Fukuda S, Namba T, Seki T, Hisatsune T (2005) GABAergic excitation promotes neuronal differentiation in adult Hippocampal progenitor cells. *Neuron* 47:803–815
- Vivar C, Potter MC, Choi J, Lee J, Stringer TP, Callaway EM, Gage FH, Suh H, van Praag H (2012) Monosynaptic inputs to new neurons in the dentate gyrus. *Nat Commun* 3:1107
- Wang C, Shimizu-Okabe C, Watanabe K, Okabe A, Matsuzaki H, Ogawa T, Mori N, Fukuda A, Sato K (2002) Developmental changes in KCC1, KCC2, and NKCC1 mRNA expressions in the rat brain. *Dev Brain Res* 139:59–66
- Wang LP, Kempermann G, Kettenmann H (2005) A subpopulation of precursor cells in the mouse dentate gyrus receives synaptic GABAergic input. *Mol Cell Neurosci* 29:181–189
- Wang JM, Liu L, Irwin RW, Chen S, Brinton RD (2008) Regenerative potential of allopregnanolone. *Brain Res Rev* 57:398–409
- Wang JM, Singh C, Liu L, Irwin RW, Chen S, Chung EJ, Thompson RF, Brinton RD (2010) Allopregnanolone reverses neurogenic and cognitive deficits in mouse model of Alzheimer's disease. *Proc Natl Acad Sci U S A* 107:6498–6503
- Wang B, Wang Z, Sun L, Yang L, Li H, Cole AL, Rodriguez-Rivera J, Lu H-C, Zheng H (2014) The Amyloid precursor protein controls adult Hippocampal Neurogenesis through GABAergic Interneurons. *J Neurosci* 34:13314–13325

- Watanabe Y, Murakami T, Kawashima M, Hasegawa-Baba Y, Mizukami S, Imatanaka N, Akahori Y, Yoshida T, Shibutani M (2017) Maternal exposure to valproic acid primarily targets interneurons followed by late effects on neurogenesis in the hippocampal dentate gyrus in rat offspring. *Neurotox Res* 31(1):46–62
- Waterhouse EG, An JJ, Orefice LL, Baydyuk M, Liao G-Y, Zheng K, Lu B, Xu B (2012) BDNF promotes differentiation and maturation of adult-born neurons through GABAergic transmission. *J Neurosci* 32:14318–14330
- Whissell PD, Rosenzweig S, Lecker I, Wang D-S, Wojtowicz JM, Orser BA (2013)  $\gamma$ -aminobutyric acid type A receptors that contain the  $\delta$  subunit promote memory and neurogenesis in the dentate gyrus. *Ann Neurol* 74:611–621
- Winner B, Winkler J (2015) Adult Neurogenesis in Neurodegenerative Diseases: Figure 1. *Cold Spring Harb Perspect Biol* 7:a021287
- Xu J-C, Xiao M-F, Jakovcevski I, Sivukhina E, Hargus G, Cui Y-F, Irintchev A, Schachner M, Bernreuther C (2014) The extracellular matrix glycoprotein tenascin-R regulates neurogenesis during development and in the adult dentate gyrus of mice. *J Cell Sci* 127:641–652
- Young SZ, Taylor MM, Wu S, Ikeda-Matsuo Y, Kubera C, Bordey A (2012) NKCC1 knockdown decreases neuron production through GABA(a)-regulated neural progenitor proliferation and delays dendrite development. *J Neurosci* 32:13630–13638
- Yutsudo N, Kamada T, Kajitani K, Nomaru H, Katogi A, Ohnishi YH, Ohnishi YN, Takase K, Sakumi K, Shigeto H, Nakabeppu Y (2013) fosB-null mice display impaired adult hippocampal neurogenesis and spontaneous epilepsy with depressive behavior. *Neuropsychopharmacology* 38:895–906
- Zaben M, Sheward WJ, Shtaya A, Abbosh C, Harmar AJ, Pringle AK, Gray WP (2009) The neurotransmitter VIP expands the pool of symmetrically dividing postnatal dentate gyrus precursors via VPAC2 receptors or directs them toward a neuronal fate via VPAC1 receptors. *Stem Cells* 27:2539–2551
- Zhao C, Teng EM, Summers RG, Ming G-L, Gage FH (2006) Distinct morphological stages of dentate granule neuron maturation in the adult mouse hippocampus. *J Neurosci* 26:3–11
- Zhao C, Deng W, Gage FH (2008) Mechanisms and functional implications of adult Neurogenesis. *Cell* 132:645–660
- Zhou M, Li W, Huang S, Song J, Kim Y, Tian X, Kang E, Sano Y, Liu C, Balaji J, Wu S, Zhou Y, Parivash SN, Ehninger D, He L, Song H, Ming GL, Silva AJ (2013) mTOR inhibition ameliorates cognitive and affective deficits caused by Disc1 knockdown in adult-born dentate granule neurons. *Neuron* 77(4):647–654
- Zhuo J-M, Tseng H, Desai M, Bucklin ME, Mohammed AI, Robinson NT, Boyden ES, Rangel LM, Jasanoff AP, Gritton HJ, Han X (2016) Young adult born neurons enhance hippocampal dependent performance via influences on bilateral networks. *elife* 5:e22429